



MONTHLY MEMBERSHIP PROGRESS REPORT

District 7 O

Results as of: 5/31/2017

GMT: HAL GRIFFIN

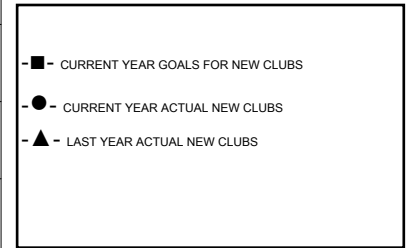
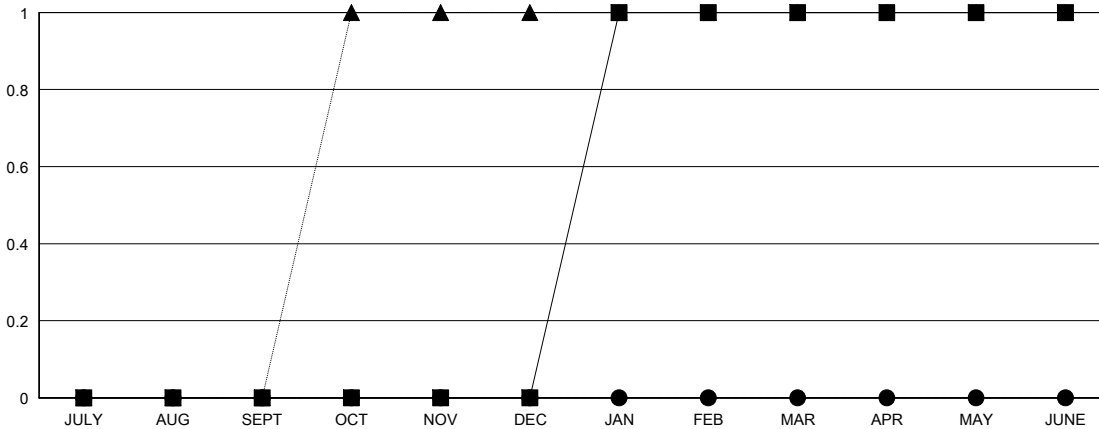
LOCATION ARKANSAS

GMT CA

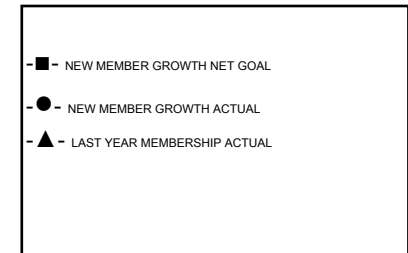
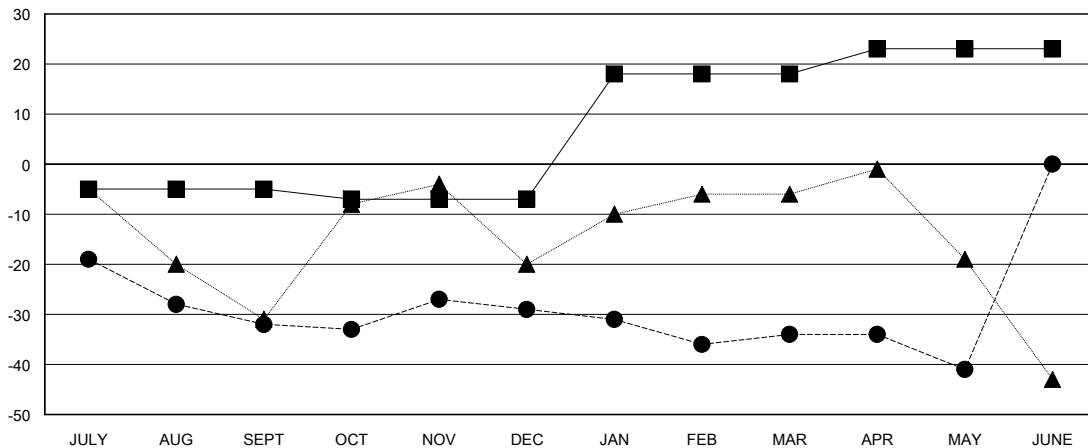
Clubs			
RESULTS FOR 2016-2017			
QUARTER	NEW CLUB GOAL	NEW CLUBS	DROPPED CLUBS
JULY/AUG/SEPT	0	0	0
OCT/NOV/DEC	0	0	0
JAN/FEB/MAR	1	0	0
APR/MAY/JUNE	0	0	0

Members			
RESULTS FOR 2016-2017			
QUARTER	NEW MEMBER GROWTH NET GOAL (not reinstated or transfers)	NEW MEMBER GROWTH ACTUAL (not reinstated or transfers)	DROPPED MEMBERS ACTUAL (including transfers)
JULY/AUG/SEPT	-5	14	46
OCT/NOV/DEC	-2	21	18
JAN/FEB/MAR	25	17	22
APR/MAY/JUNE	5	18	25

GOALS AND ACTUAL NEW CLUBS CUMULATIVE



GOALS AND ACTUAL MEMBERS CUMULATIVE



DROPPED CLUBS: 0	19 CLUBS OF 30 ADDED 1 OR MORE NEW MEMBERS	<u>GENDER DISTRIBUTION</u>
		MALE 439 (66.31%)
		FEMALE 223 (33.69%)
<u>DROPPED MEMBERS</u>	CLICK HERE FOR CUMULATIVE MEMBERSHIP DATA	TOTAL FAMILY UNIT MEMBERS 93
DECEASED 13		FAMILY MEMBERS PAYING HALF DUES 48
CLUB CANCELLED 0		
OTHER 98		
TOTAL 111		